



**Apple
Gardens
Residence**



Apple Gardens Residence

Apple Gardens Residence is a hidden gem, In close proximity to Marrakech's city center, only a 15-minute drive away, along the route leading to Fes. This prestigious residential enclave is nestled within a widespread 6-hectare estate, offering breathtaking views of the Atlas Mountains.

Featuring 47 lavish villas, each residence is a masterpiece of architectural design, complete with private pools and lush gardens. Choose from our selection of 4 villa types, allowing you to tailor your living experience to match your needs and desires.

The residence is under 24/7 surveillance, providing a secure environment with reserved parking for guests and a plethora of amenities. Enjoy the tranquility of meticulously maintained green spaces, stay fit with our outdoor fitness area, and provide your children with a dedicated play space. Every detail of the residence has been carefully designed to elevate your daily life. Welcome to a world where prestige meets serenity. Welcome home.



A residence designed for your well-being



Secure residence



High-end finishes



Strategic location



Fitness zone



Modern architecture



Services and amenities



Green spaces



Play area

Location Plan



Site plan



Section	N	type	plot size	covered area
Section 1	1	VILLA JADE	864 M ²	232.00 M ²
	2	VILLA JADE	768 M ²	232.00 M ²
	3	VILLA TOPAZE	909 M ²	224.00 M ²
	4	VILLA TOPAZE	944 M ²	224.00 M ²
Section 2	5	VILLA JADE	966 M ²	232.00 M ²
	6	VILLA TOPAZE	789 M ²	224.00 M ²
	7	VILLA TOPAZE	764 M ²	224.00 M ²
Section 3	8	VILLA JADE	887 M ²	232.00 M ²
	9	VILLA TOPAZE	1060 M ²	224.00 M ²
	10	VILLA TOPAZE	923 M ²	224.00 M ²
	11	VILLA TOPAZE	796 M ²	224.00 M ²
	12	VILLA JADE	818 M ²	232.00 M ²
Section 4	13	VILLA JADE	925 M ²	232.00 M ²
	14	VILLA TOPAZE	882 M ²	224.00 M ²
	15	VILLA TOPAZE	866 M ²	224.00 M ²
	16	VILLA JADE	924 M ²	232.00 M ²
	17	VILLA JADE	1021 M ²	232.00 M ²
-	-	-	-	-

Section	N	type	plot size	covered area
Section 5	18	VILLA TOPAZE	967 M ²	224.00 M ²
	19	VILLA TOPAZE	864 M ²	224.00 M ²
	20	VILLA TOPAZE	768 M ²	224.00 M ²
	21	VILLA TOPAZE	795 M ²	224.00 M ²
	22	VILLA TOPAZE	1112 M ²	224.00 M ²
Section 6	23	VILLA RUBIS	1017 M ²	356.00 M ²
	24	VILLA RUBIS	838 M ²	356.00 M ²
	25	VILLA RUBIS	796 M ²	356.00 M ²
	26	VILLA RUBIS	765 M ²	356.00 M ²
Section 7	27	VILLA RUBIS	767 M ²	356.00 M ²
	28	VILLA RUBIS	764 M ²	356.00 M ²
	29	VILLA RUBIS	809 M ²	356.00 M ²
Section 8	30	VILLA RUBIS	834 M ²	356.00 M ²
	31	VILLA RUBIS	842 M ²	356.00 M ²
	32	VILLA RUBIS	849 M ²	356.00 M ²
Section 9	33	VILLA RUBIS	818 M ²	356.00 M ²
	34	VILLA RUBIS	767 M ²	356.00 M ²
	35	VILLA RUBIS	815 M ²	356.00 M ²

Section	N	type	plot size	covered area
Section 10	36	VILLA CITRINE	237 M ²	180.00 M ²
	37	VILLA CITRINE	239 M ²	180.00 M ²
	38	VILLA CITRINE	214 M ²	180.00 M ²
	39	VILLA CITRINE	253 M ²	180.00 M ²
	40	VILLA CITRINE	253 M ²	180.00 M ²
	41	VILLA CITRINE	214 M ²	180.00 M ²
	42	VILLA CITRINE	213 M ²	180.00 M ²
	43	VILLA CITRINE	253 M ²	180.00 M ²
	44	VILLA CITRINE	253 M ²	180.00 M ²
	45	VILLA CITRINE	213 M ²	180.00 M ²
	46	VILLA CITRINE	258 M ²	180.00 M ²
47	VILLA CITRINE	324 M ²	180.00 M ²	

Villa Citrine

Discover Villa Citrine is a jewel at your fingertips where every detail is meticulously chosen to ensure a living experience of well-being and conviviality. Bathed in the golden sunlight of Marrakech, this luxury residence features a private garden and a pool. The beauty of this villa seamlessly blends with the lush surroundings, creating a visual harmony and a soothing atmosphere that provides moments of relaxation and serenity..

Built on plots ranging from 210 to 320 m², with a private garden and pool, and an interior living space of 180 m², Villa Citrine offers a ground floor consisting of a spacious living room and a semi-equipped American kitchen. A bedroom with a private bathroom and guest toilets complete this first level. Upstairs, a master bedroom with ensuite bathroom, a second bedroom with a dressing room, an individual bathroom, and a terrace ideal for contemplating the enchanting sunsets of the city of Marrakech.



From 210 to 320 m²



Living space of 180 m²



3 spacious Bedrooms



3 Bathrooms



1 semi-equipped kitchen



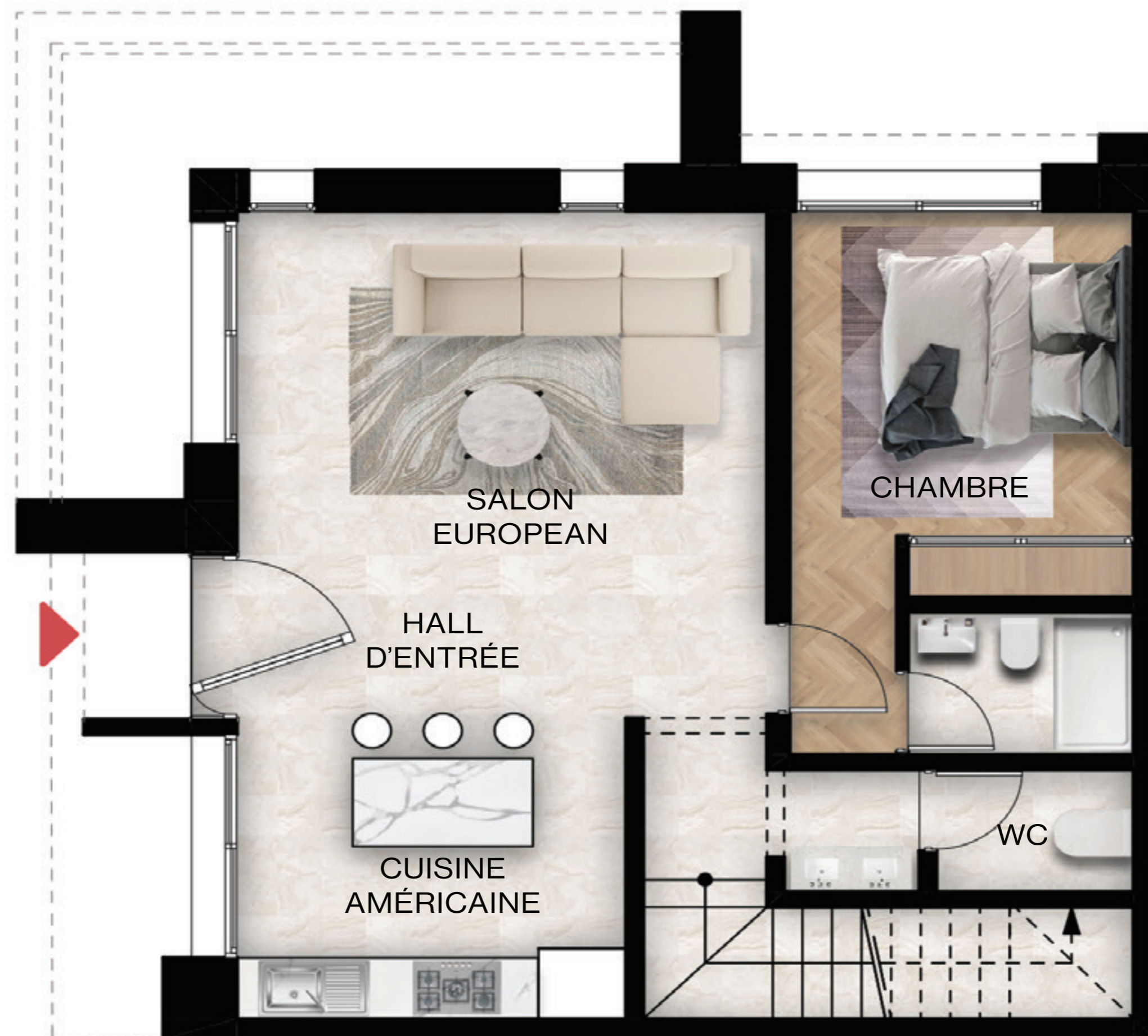
Private garden



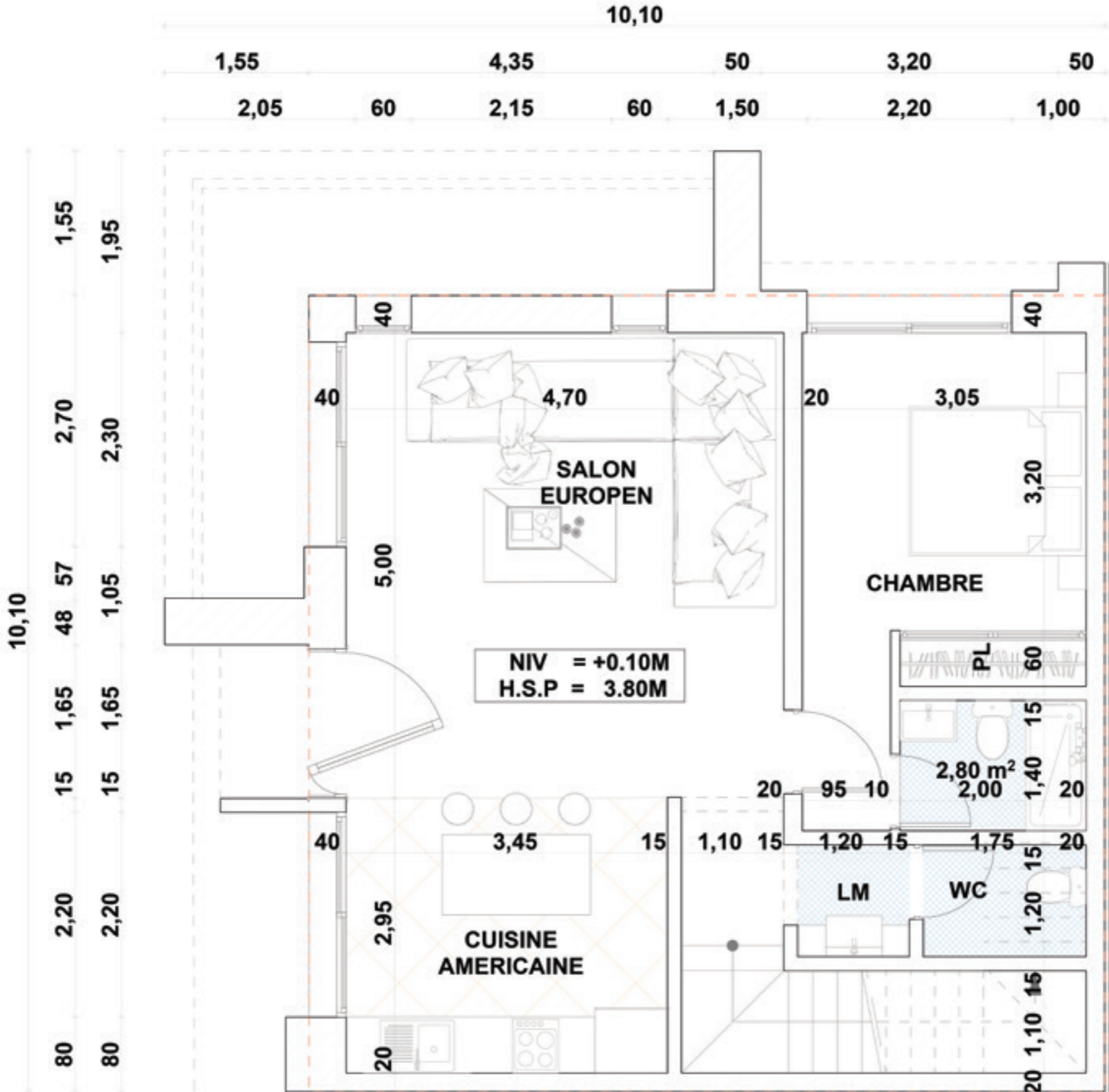
Private pool



First floor



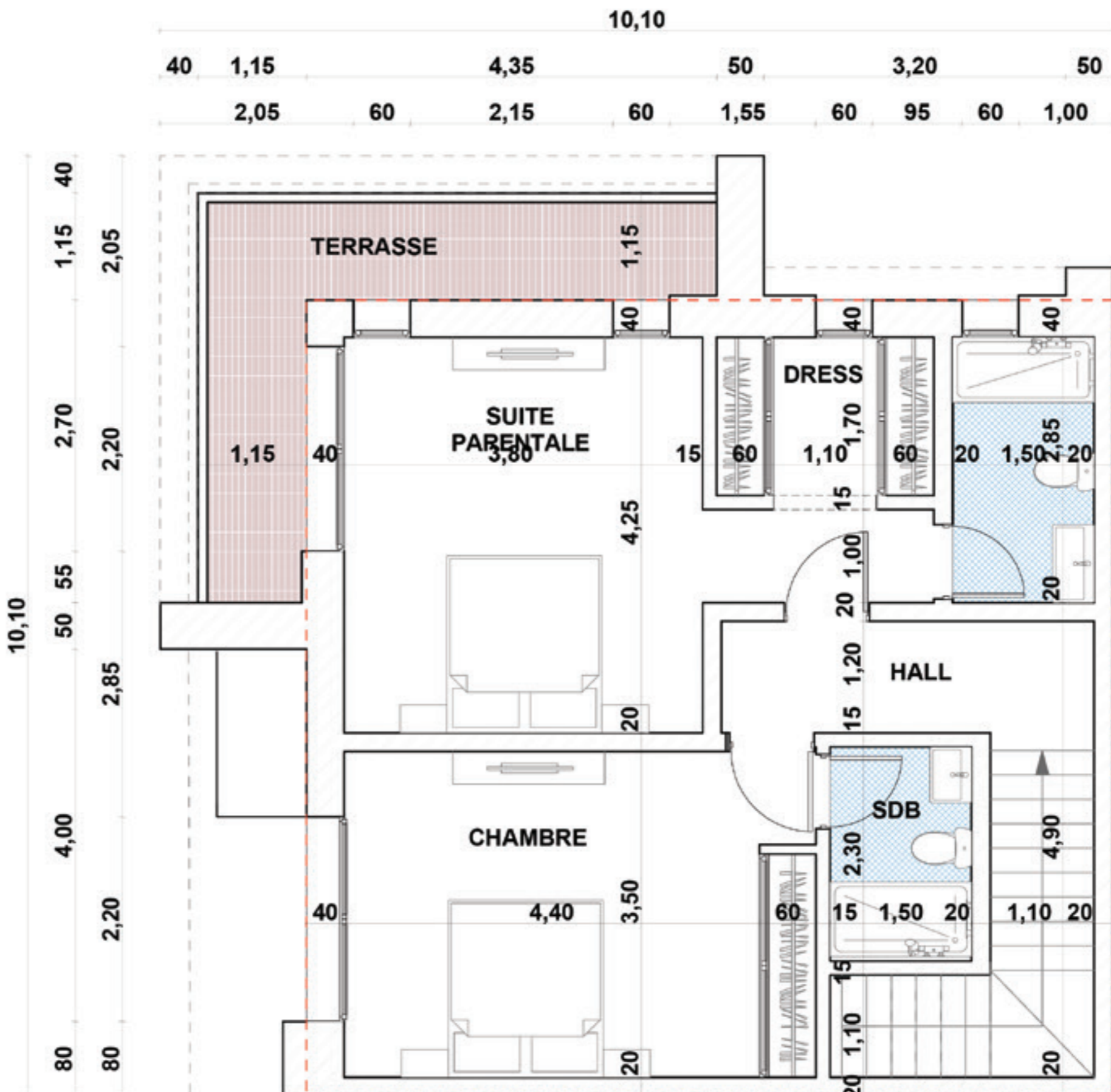
First floor



Floor



Floor



Villa Topaze

Nestled within an architectural haven of prestige, Topaz is a single-story villa exuding modern refinement, where every detail reflects meticulously designed luxurious comfort. Surrounded by an upscale ambiance, this residence is enveloped by an expansive garden, creating an environment conducive to tranquility and sensory escape. This villa is crafted to provide an exceptional experience, blending tranquility with a vibrant atmosphere of celebration and luxury.

Built on a plot ranging from 760 to 1100 m², with a living space of 224 m², Villa Topaz features an entrance where the living room, lounge, and dining area seamlessly blend into an open space flooded with natural light. The property boasts three bedrooms, each with a private bathroom, and a staff room adjacent to a semi-equipped kitchen. The lifestyle inspired by Topaz encourages sharing moments of pure pleasure outdoors on the terrace overlooking a splendid pool or on the rooftop, enjoying a summer evening under a starlit sky.



From 760
to 1100 m²



Living space
of 224m²



3 spacious
Bedrooms



1 Staff
t room



1 semi
equipped kitchen



3
Bathrooms



Private
pool



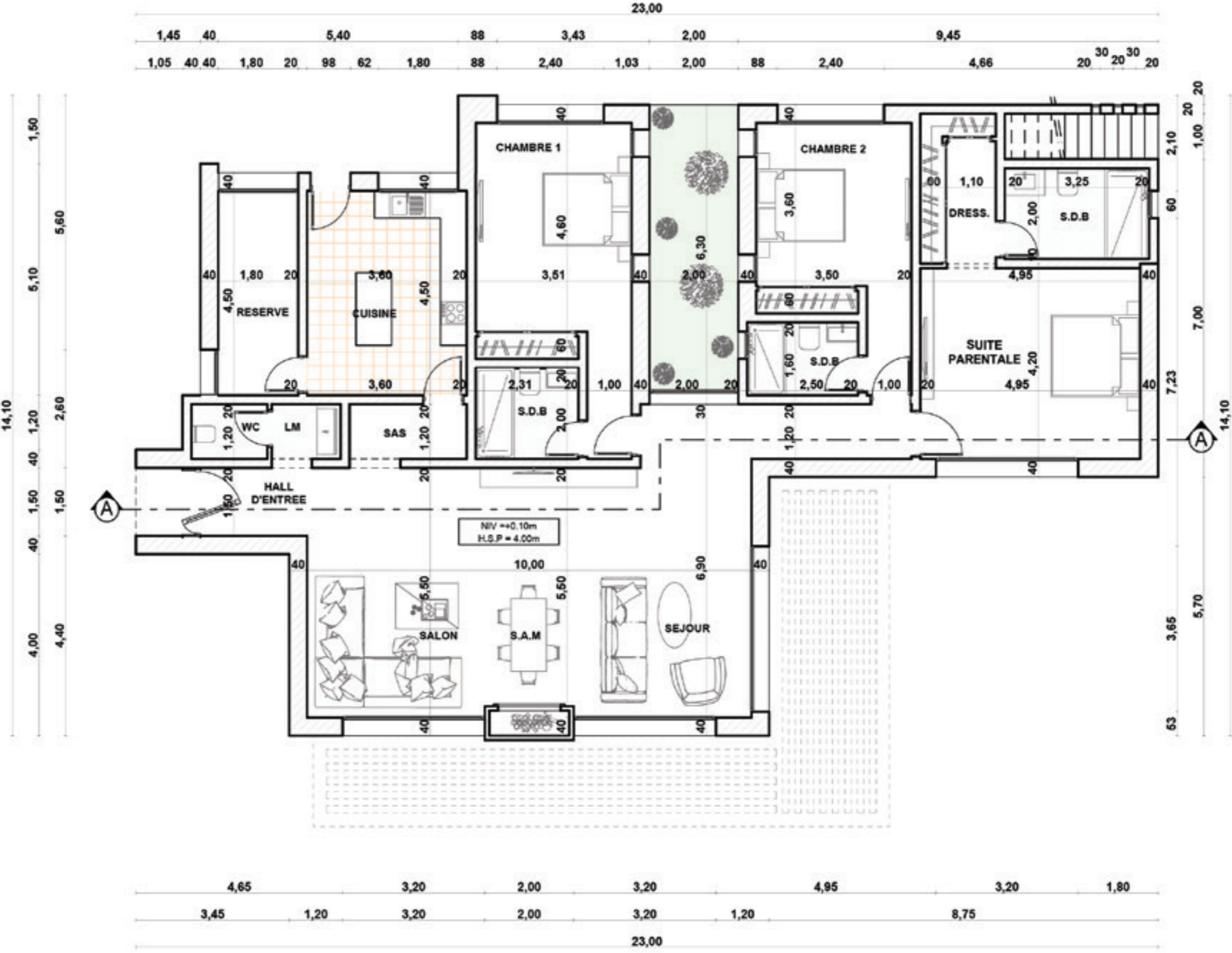
Private
garden



First floor



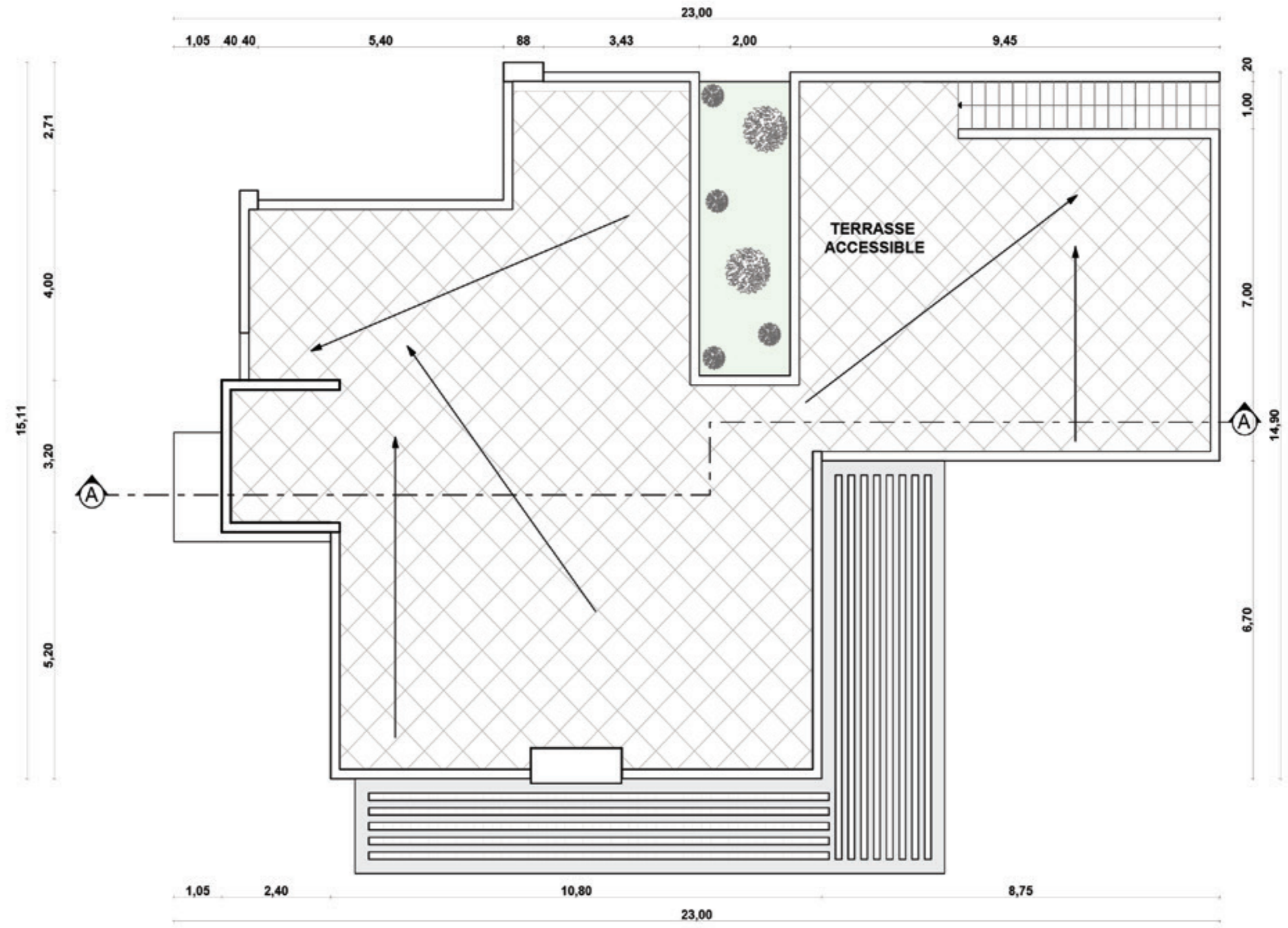
First floor



Terrace



Terrace



Villa Jade

Nestled away from the chaos of daily life, Villa Jade is a sanctuary where one can unwind and enjoy exceptional moments in a prestigious and serene setting. This single-story residence, with modern design, exudes timeless elegance. Surrounded by a lush garden where exotic scents blend with the melody of birdsong, this property delivers a unique living experience. At the center of this oasis, a sparkling pool invites relaxation, providing moments of pure bliss under the alluring Marrakech sun.

Jade, an exceptional residence on a 770 to 1000 m² plot. With its 232 m² of residential space, this villa epitomizes the perfect blend of architectural intelligence and modern refinement. Upon entry, you'll be captivated by a welcoming space comprising a living room, lounge, and dining area. Three luxurious bedrooms, each with a walk-in closet and private bathroom, offer absolute comfort. The semi-equipped kitchen, conveniently located near a service room, adds a touch of practicality. As a bonus, a spacious terrace unveils a stunning view of the Atlas Mountains.



From 770
to 1000 m²



Living space
of 232 m²



3 spacious
Bedrooms



1 Staff
room



1 semi
equipped kitchen



3
Bathrooms



Private
pool



Private
garden



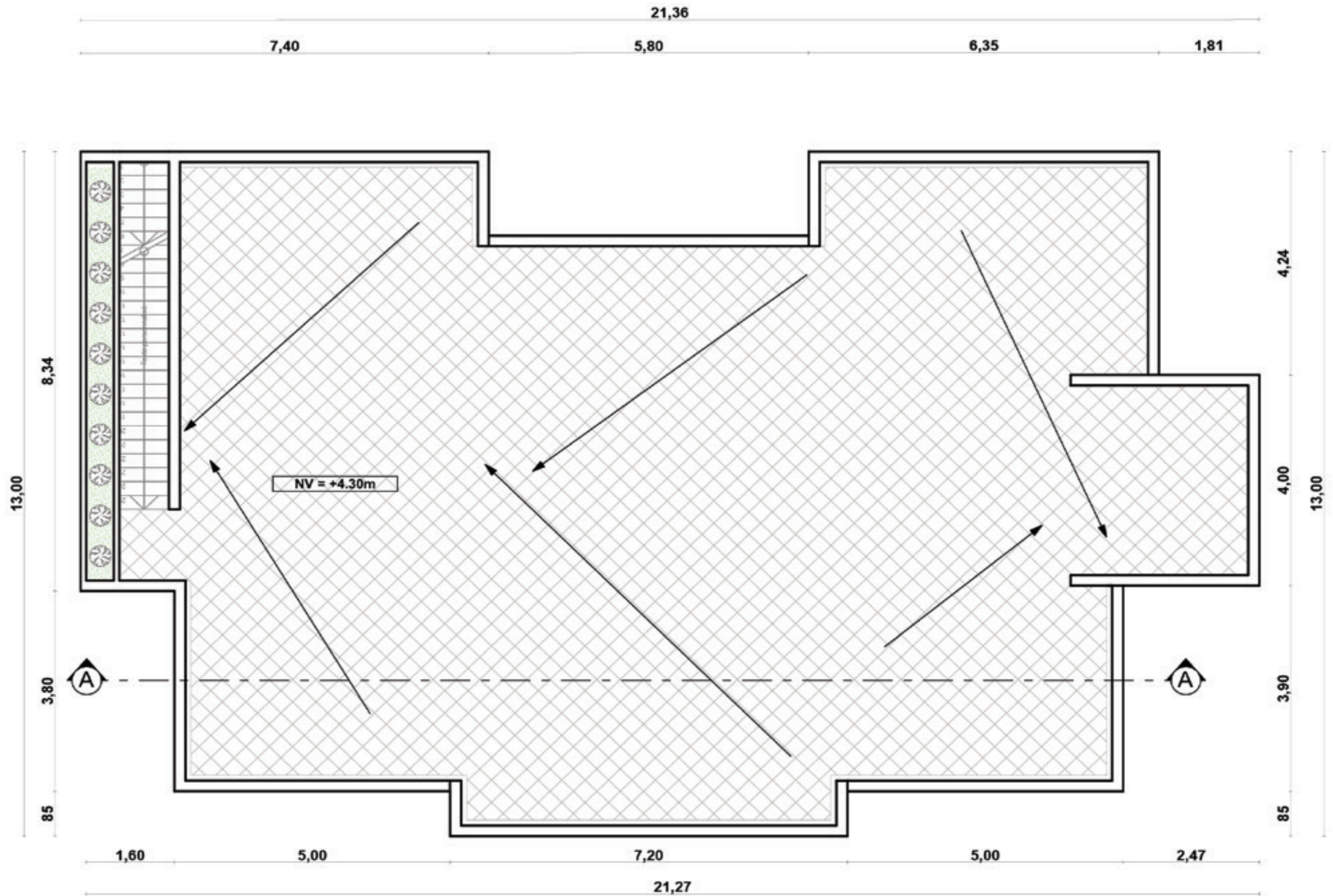
First floor



Terrace



Terrace



Villa Rubis

Ruby embodies the very essence of absolute luxury, where every detail has been well thought-out to evoke refinement and provide unparalleled comfort. With its timeless design and striking modernity, this villa stands as the epicenter of all desires. To seamlessly merge indoor and outdoor living, a terrace unfolds onto a splendid pool surrounded by a lush garden. This outdoor space invites you to create memories al fresco, to be shared with family or friends, all while enjoying the sunny and pleasant climate of Marrakech.

Ruby, an exquisite residence situated on a 750 to 1100 m² plot. Featuring an impressive living space of 346 m², this villa presents a luxurious ground floor revealing a living room, lounge, dining area, and a convenient service quarter with a semi-equipped kitchen, staff bedroom, and pantry. Two sumptuous bedrooms with private bathrooms and walk-in closets, along with guest toilets, complete this living space. Upstairs, a master suite and a fourth bedroom with individual bathrooms, dressings, and terraces for unforgettable moments of bliss.



From 760
to 1000 m²



Surface Couverte
356 m²



4 spacious
Bedrooms



1 Staff
room



1 semi
equipped kitchen



4
Bathrooms



Private
pool



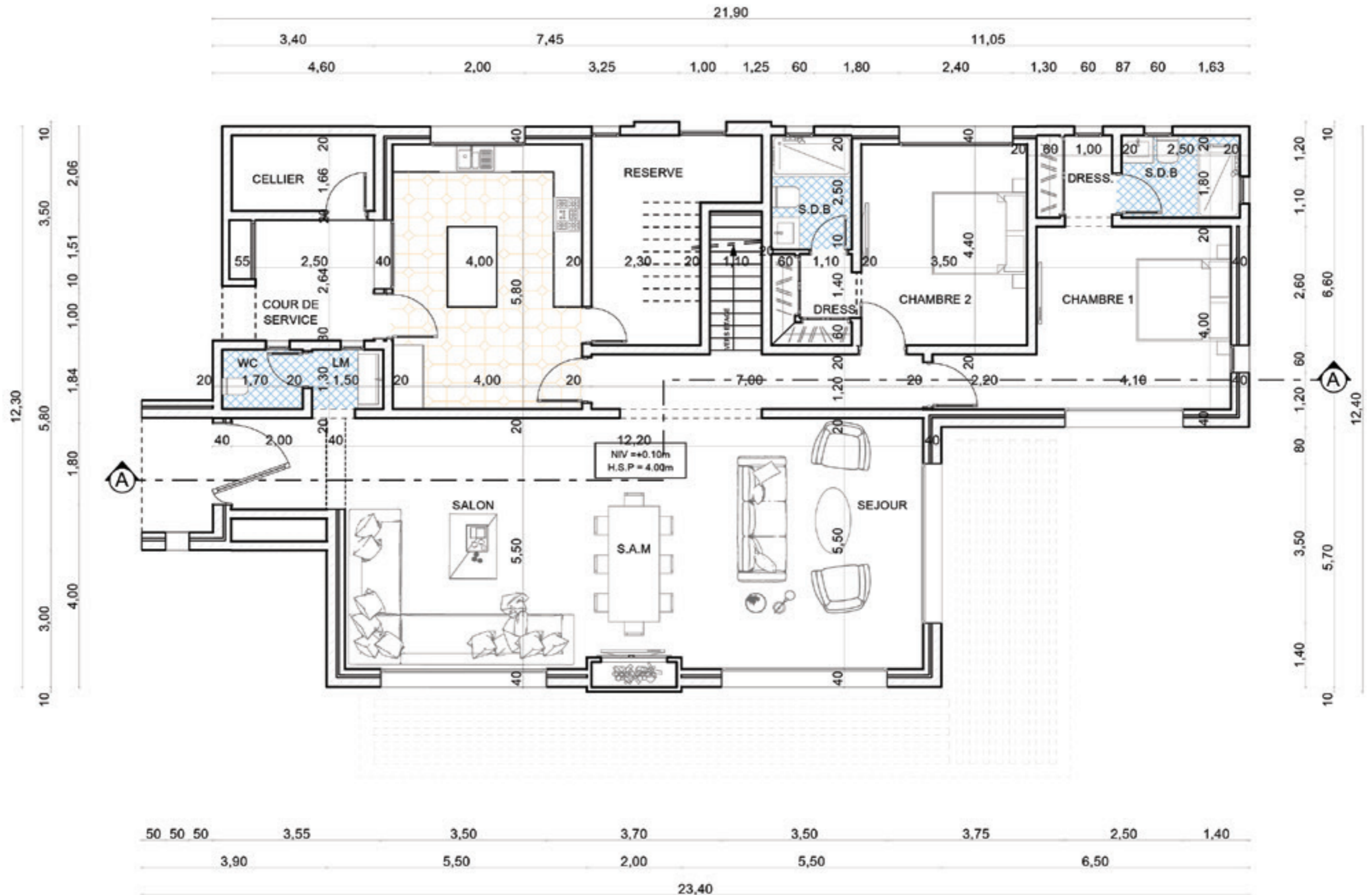
Private
garden



First floor



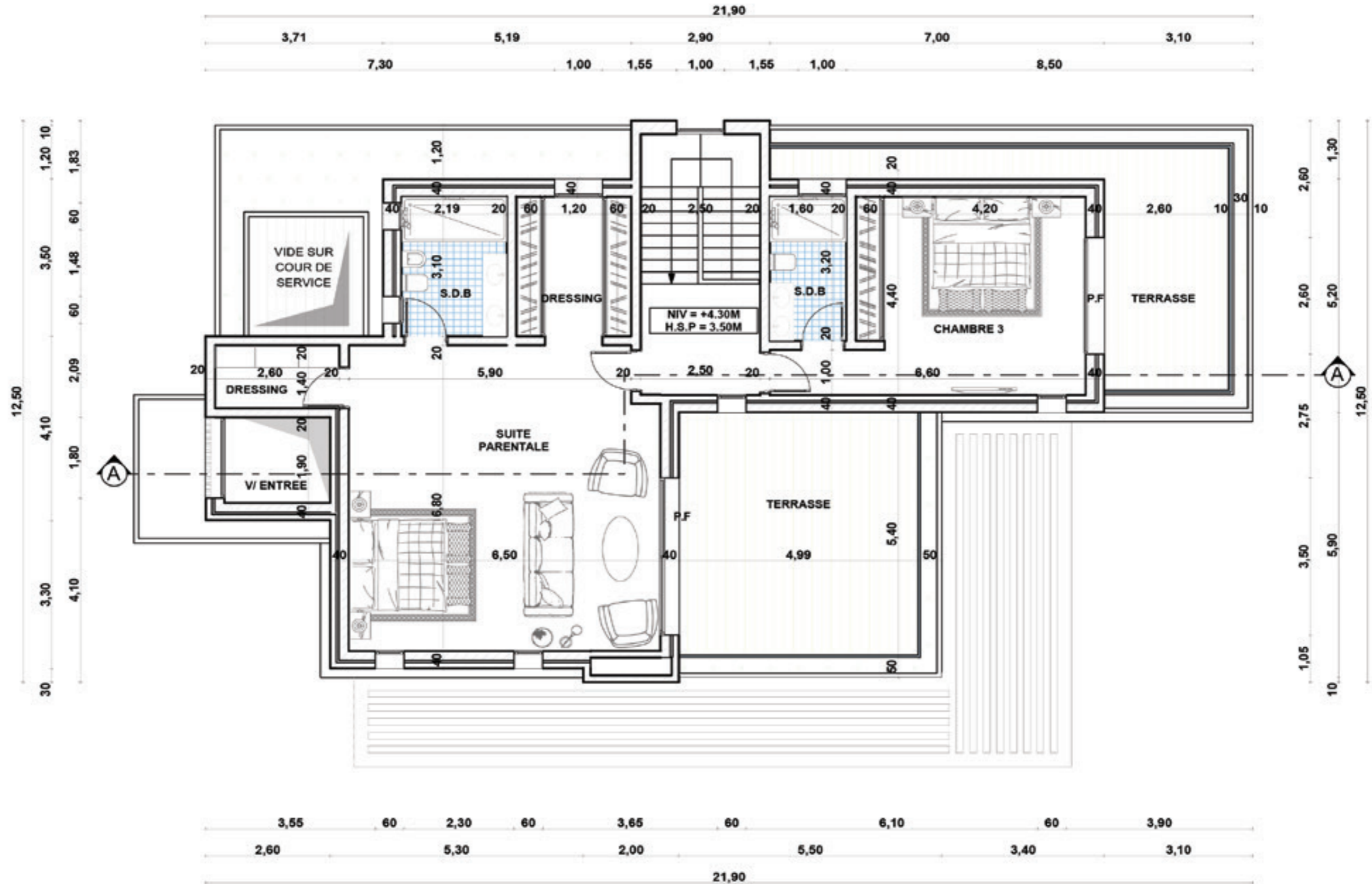
First floor



Floor



Floor

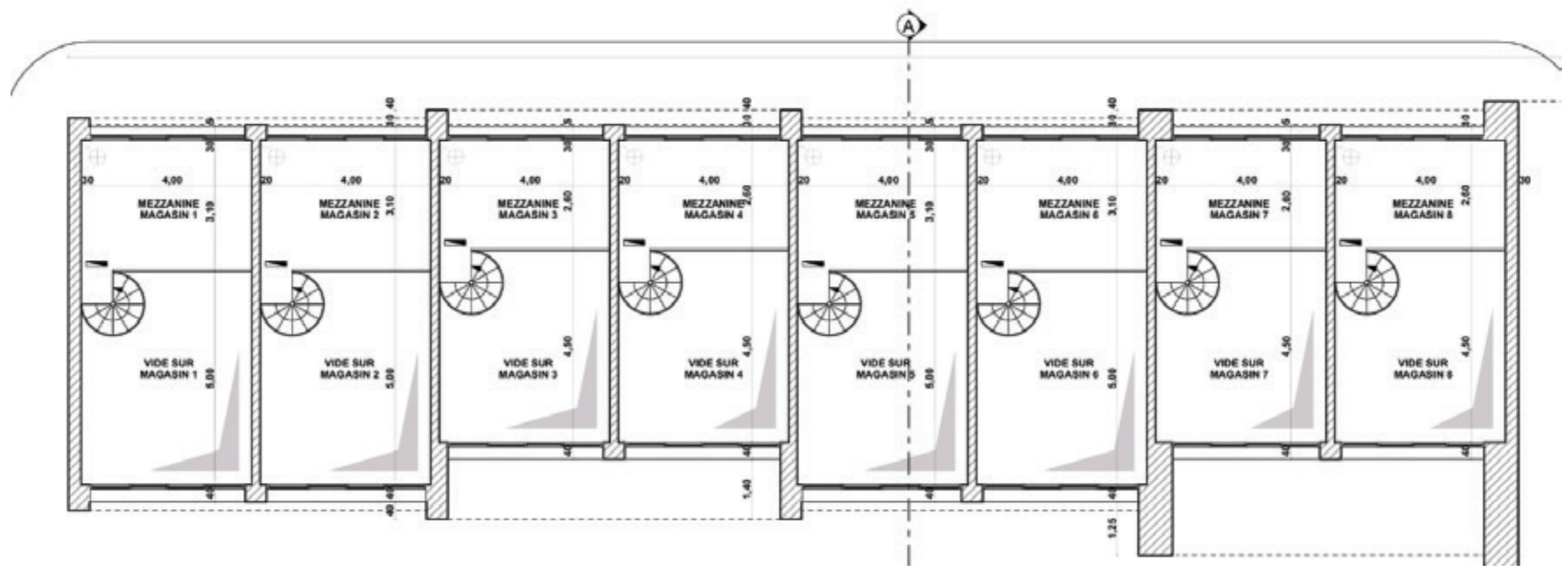
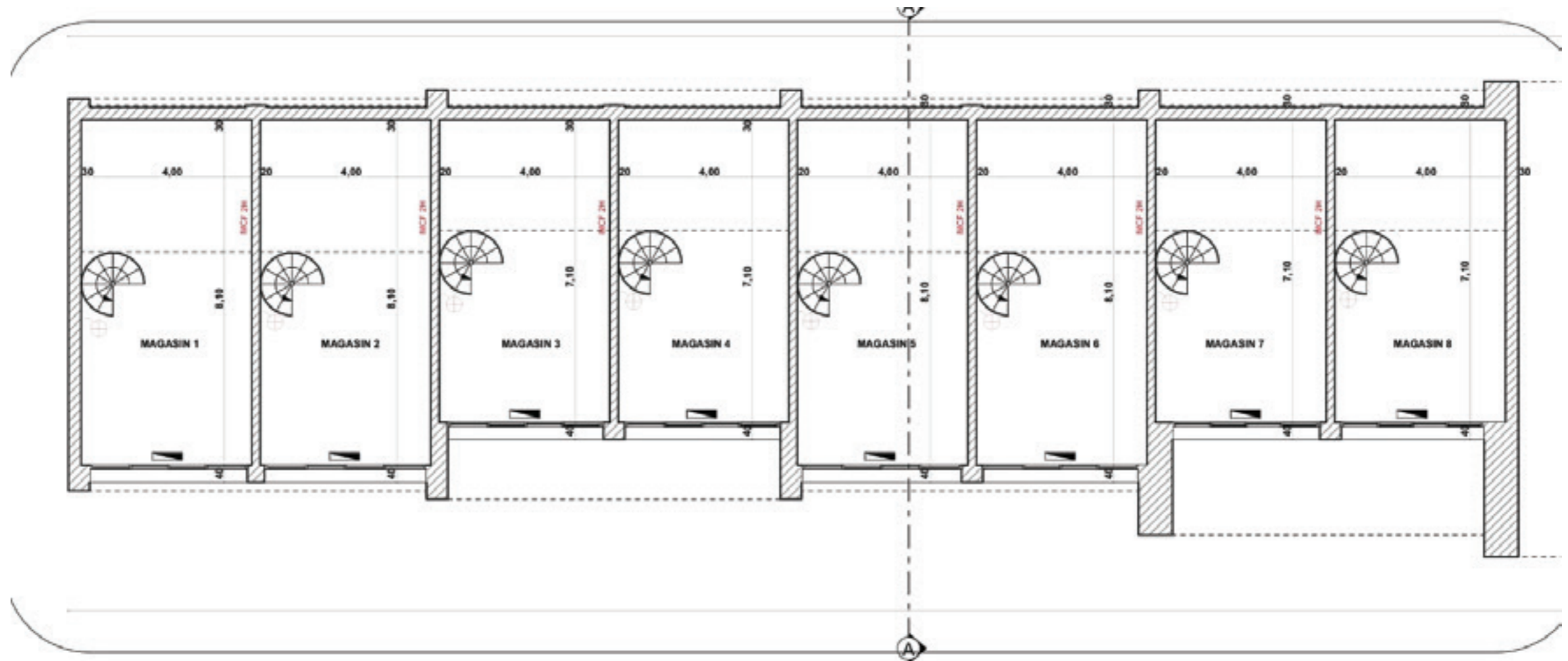


COMMERCIAL SPACES

An outstanding investment opportunity, featuring 16 commercial spaces strategically positioned along a dynamic roadway. These commercial areas are ideally situated to attract a steady flow of potential customers. Nestled in a constantly growing area, these businesses promise a flourishing future, providing investors with a unique chance to thrive in a dynamic market. With their proximity to numerous neighboring residences, these premises have a built-in customer base, ensuring an attractive return on investment. Don't miss the opportunity to access the commercial potential of these spaces, invest now in your future success.



N°	Ground Floor area	Mezzanine Area
1	39 m	15 m
2	37 m	14 m
3	33 m	12 m
4	33 m	12 m
5	37 m	14 m
6	37 m	14 m
7	33 m	12 m
8	34 m	13 m
9	34 m	13 m
10	33 m	12 m
11	37 m	14 m
12	37m	14 m
13	33 m	12 m
14	33m	12 m
15	37 m	14 m
16	39m	15 m





 +212 6 73 70 22 70

 +212 6 61 48 14 79

 +212 5 24 32 21 21

 contact@agrmarrakech.com

 sales@agrmarrakech.com

 www.agrmarrakech.com

Suivez nous en ligne



@applegardensresidence